



©2009 The Foundry Visionmongers Ltd. All rights reserved.

RollingShutter 1.0 User Guide

This manual, as well as the software described in it, is furnished under license and may only be used or copied in accordance with the terms of such license. This manual is provided for informational use only and is subject to change without notice. The Foundry assumes no responsibility or liability for any errors of inaccuracies that may appear in this book.

No part of this manual may be reproduced, stored in a retrieval system, or transmitted in any form without the prior written permission of The Foundry.

The Foundry logo is a trademark of The Foundry Visionmongers Ltd. Nuke is a registered trademark of The Foundry Visionmongers Ltd. All other products or brands are trademarks or registered trademarks of their respective companies or organisations.

Software engineering Simon Robinson, Ralph McEntagart, and Mailys Levassort.

Product testing Dan Allum.

Writing and layout design Eija Närvänen using Adobe FrameMaker.

Proof reading Eija Närvänen.

Special thanks to Victor Wolansky, Thorsten Kaufmann, and fxphd (<http://www.fxphd.com/>).

Contents

Introduction	About this User Guide.....	5
	What's New?.....	5
	System Requirements.....	6
	Installation.....	6
	Install Directory.....	7
	Generic Install Directory.....	8
	Moving the Plug-ins Directory.....	8
	Installing a License.....	8
	System ID (Imhostid).....	9
	Where Does the License File Go?.....	10
	License Problems.....	11
	Background Rendering.....	12
	Further Reading.....	14
	Other Foundry Products.....	15
RollingShutter	Description.....	17
	Shutter Sync.....	18
	Inputs.....	20
	Quick Start.....	21
	Controls.....	22
	Example.....	27
Local Motion Estimation	Introduction.....	33
	Description.....	33
Appendix A	Release Notes.....	35

Appendix B	End User License Agreement	37
Index	A-Z	45

INTRODUCTION

Welcome to this User Guide for RollingShutter 1.0 on Nuke. RollingShutter is a plug-in that estimates a corrected image from an image sequence captured with a CMOS camera.

The plug-in compensates for the skewing of objects caused by their relative motion to the camera. Adjustment is performed locally, so objects moving in different directions or at varying speeds can be individually corrected. The correction can help make a shot trackable and remove visual artifacts from the distortion of objects.

The RollingShutter plug-in integrates seamlessly into Nuke. It is applied to your clips as any other node and animated using the standard Nuke animation tools.

About this User Guide

This User Guide will tell you how to install and use the RollingShutter 1.0 plug-in. The usage of the plug-in is described in detail in the next chapter.

This guide assumes you are familiar with Nuke and the machine it is running on.

Note *For the most up to date information, please see the RollingShutter on Nuke product page and the latest RollingShutter 1.0 on Nuke User Guide on our web site at <http://www.thefoundry.co.uk>.*

What's New?

Have a look at the new features and improvements in Appendix A.

System Requirements

RollingShutter 1.0 plugs into Nuke 5.1 or later running on Windows, Mac OS X, or Linux. It does not work in Nuke 5.0, 4.8, or earlier versions.

Installation

On Windows

RollingShutter is distributed as a software download from our web site at <http://www.thefoundry.co.uk/>. To install RollingShutter on a computer running Windows follow these instructions:

1. Download one of the following files from our web site at www.thefoundry.co.uk:
RollingShutter_1.0v1_Nuke-win-x86-release-32.exe
RollingShutter_1.0v1_Nuke-win-x86-release-64.exe
Which file you should download depends on whether you are using a 32- or 64-bit version of Nuke.
2. Double click on the exe file to launch the installer. Follow the on-screen instructions to install the plug-ins.
3. Proceed to "Other Foundry Products" on page 15.

On Mac

RollingShutter is distributed as a software download from our web site at <http://www.thefoundry.co.uk/>. To install RollingShutter 1.0 on a Mac, follow these instructions:

1. Download the following file from our web site at www.thefoundry.co.uk:
RollingShutter_1.0v1_Nuke-mac-universal-release-32.dmg
2. Double click on the downloaded dmg file.
3. Double click on the pkg file that is created.
4. Follow the on-screen instructions to install the plug-ins.

5. Proceed to “Other Foundry Products” on page 15.

On Linux

RollingShutter is distributed as a software download from our web site at <http://www.thefoundry.co.uk/>. To install RollingShutter 1.0 on a computer running Linux, follow these instructions:

1. Download one of the following files from our web site at www.thefoundry.co.uk:
RollingShutter_1.0v1_Nuke-linux-x86-release-32.tgz
RollingShutter_1.0v1_Nuke-linux-x86-release-64.tgz
Which file you should download depends on whether you are using a 32- or 64-bit version of Nuke.
2. Move the downloaded file to the following directory (create the directory if it does not yet exist):
`/usr/OFX/`
3. In the above mentioned directory, extract the files from the archive using one of the following commands. This will create a Nuke subdirectory (if one doesn't already exist) and install the plug-ins in that directory.
`tar xvzf RollingShutter_1.0v1_Nuke-linux-x86-release-32.tgz`
`tar xvzf RollingShutter_1.0v1_Nuke-linux-x86-release-64.tgz`
Which command you use depends on which file you downloaded from our web site.
4. Proceed to “Other Foundry Products” on page 15.

Install Directory

A host-specific directory is searched first for the RollingShutter plug-in and then the general OFX plug-in directory.

For Nuke on Windows this is:

C:\Program Files\Common Files\OFX\Nuke\ or
C:\Program Files (x86)\Common Files\OFX\Nuke\

For Mac OS X:
/Library/OFX/Nuke/

For Linux:
/usr/OFX/Nuke/

Generic Install Directory

After looking in the host-specific directory for a RollingShutter plug-in, we search in the generic OFX plug-in directory as follows.

For Windows:
C:\Program Files\Common Files\OFX\Plugins\ or
C:\Program Files (x86)\Common Files\OFX\Plugins\

For Mac OS X:
/Library/OFX/Plugins/

For Linux:
/usr/OFX/Plugins/

Moving the Plug-ins Directory

You can put the OFX plug-ins anywhere as long as you set the environment variable OFX_PLUGIN_PATH to point to it.

Installing a License

Once you have received your license file, you need to install the license. The Foundry License Installer (FLI) application

helps you with this. You may have received this application in an e-mail or downloaded it from <http://www.thefoundry.co.uk/licensing>.

To install a license:

1. Open the directory where you have saved the license file and the Foundry License Installer.
2. Double-click on the Foundry License Installer application.
3. In the window that opens, click Install.

This checks the license file and installs it into the correct directory.

If you installed a node-locked license key (a license that allows you to run the software on one machine only), you're good to go. Start Nuke and check your plug-in is licensed. If it is not, check that you have a foundry.lic license file in the correct directory. See "Where Does the License File Go?" on page 10.

If you are installing a floating license key, you will be asked whether you want to create a client license file. For more information on how to install floating licenses, see "Background Rendering" on page 12.

System ID (Imhostid)

The System ID (sometimes called Imhostid) is a unique number that identifies your computer. We use this number to generate a license key for that, and only that, computer.

To find out your System ID, download the Foundry System ID (FSID) utility from <http://www.thefoundry.co.uk/licensing> and run it.

Where Does the License File Go?

The license file should be called `foundry.lic` and saved in the following directory as a plain text file.

Windows XP

If you're on Windows XP, this is where the license file should go:

`C:\Program Files\The Foundry\FLEXIm\foundry.lic`

`C:\Program Files (x86)\The Foundry\FLEXIm\foundry.lic`

Windows Vista

If you're on Windows Vista, this is where the license file should go:

`C:\ProgramData\The Foundry\FLEXIm\foundry.lic`

Mac

If you're on a Mac, this is where the license file should go:
`/Library/Application Support/TheFoundry/FLEXIm/foundry.lic`

Linux

If you're on Linux, this is where the license file should go:
`/usr/local/foundry/FLEXIm/foundry.lic`

There are also other places where you can place the license file. See "Alternative License Directories" on page 10.

Alternative License Directories

If you like, you can also put the license file in an arbitrary directory and point to it with the environment variable:
`FOUNDRY_LICENSE_FILE`

This can be useful for large post houses that have centrally managed license servers, but will not be necessary for most customers.

See “Further Reading” on page 14.

Can I Install RollingShutter on More Than One Computer?

You can install RollingShutter on as many machines as you like, but a watermark will be drawn over the image if there isn't a valid license key for that machine.

If you wish to render the RollingShutter plug-in on a network of render-only versions of Nuke, you will need to purchase RollingShutter render licenses.

See “Background Rendering” on page 12.

Watermark

If you don't have a valid license key, a warning will be displayed and the finished render will have scattered coloured dots across it.

License Problems

If you can't get your licenses to work, you can download The Foundry License Diagnostics (FLD) utility from <http://www.thefoundry.co.uk/licensing>. Run the FLD and e-mail the resulting text file to support@thefoundry.co.uk with a clear description of the problem.

Error Log Files

If the plug-in fails to get a license, the incident is recorded in an error log file. The time, date and nature of the problem are appended to the end of the file. The error log file can then be found in the following location:

Windows XP

C:\Program Files\The Foundry\FLEXIm\log\license.log
C:\Program Files (x86)\The Foundry\FLEXIm\log\license.log

Windows Vista

C:\ProgramData\The Foundry\FLEXIm\log\license.log

Mac

/Library/Application Support/TheFoundry/FLEXIm/log/
license.log

Linux

/usr/local/foundry/FLEXIm/log/license.log

Background Rendering

In Nuke, you can render on a network of computers. If you want to do this for compositions that use RollingShutter, you will need:

- The RollingShutter plug-in installed on the networked computers.
- A valid RollingShutter license key for each networked computer.

You may need to purchase additional license keys from The Foundry. Without these, the Nuke render engine will render RollingShutter with dots scattered on the image.

There are several ways of licensing a network of machines, but the most common and flexible would be to purchase a number of floating render licenses and have a license server manage these licenses. Render license keys will allow you to process RollingShutter using render-only versions of Nuke.

Render licenses are much cheaper than full licenses.

Here is an overview of the processes needed to set up a floating license network to render RollingShutter on up to five Nuke render engines using a Mac as the license server.

Buy a License Key

Contact The Foundry and buy a RollingShutter floating license for five machines that will run on a server with System ID = 000EA641D7A1.

Configure the Server

1. On the server (whose machine name is Red), take the license key you bought (foundry_float.lic) and install it using the Foundry License Installer (FLI), which you can download from <http://www.thefoundry.co.uk/licensing>. Here's that license key:

```
SERVER Red 000EA641D7A1 30001
VENDOR foundry
INCREMENT rollingshutter_nuke_r foundry 1.0 permanent 5\
START=8-aug-2009 SIGN="00FF 6A1B 735B A476 2069 \
0A10 6894 4903 E2CF A238 7A01 1A15 1808 7BCF 346C \
F59E 8899 F53C 2B13 E204 C7FD"
```

2. When you are asked whether you want to create a client license file, accept. This creates a client.lic file, which you need to save on your machine.
3. Download and install the Foundry FLEXIm Tools (FFT) from <http://www.thefoundry.co.uk/licensing>.
4. Having installed the Foundry FLEXIm Tools (FFT), do the following:

On a Mac: Go to /Applications/TheFoundry/FLEXImTools[version]/ and double-click on the Foundry Server Utility.

On Windows: Select Start > All Programs > The Foundry > FFT[version] > Foundry Server Utility.

On Linux: Go to the folder /usr/local/Foundry/FLEXImTools[version]/ and double-click on the FoundryServerUtility.

5. Press Start Server.

Configure the Clients

1. On each of the five render engines, install the RollingShutter plug-in.
2. Take the client license file (client.lic) that was created when you installed the floating license on the server and copy it to each of the render machines. Also copy over the Foundry License Installer.
3. Now install this license on each render machine using the Foundry License Installer.

Further information on setting up a machine to manage these licenses across a network, including how to set up a Windows render network, is beyond the scope of this user guide. See “Further Reading” on page 14. If you wish to discuss your particular requirements, please call us.

Further Reading

RollingShutter is licensed using FLEXlm. FLEXlm license keys can be locked to a particular machine (which is common for RollingShutter) or configured to manage licenses for multiple computers on a network. These floating licenses can be more cost effective if you have lots of machines which only need occasional access to RollingShutter.

Systems Administrators may wish to find out more about licensing RollingShutter with FLEXlm. We recommend reading the Foundry FLEXlm Tools (FFT) User Guide available to download from our web site (<http://www.thefoundry.co.uk/licensing>). In addition, there are general FLEXlm licensing guides on Macrovision’s web site (<http://www.macrovision.com>).

Other Foundry Products

The Foundry is a leading developer of visual effects software for film and video post production. Its products include Nuke, a high-end compositing application, and plug-ins, such as Furnace, Tinder, Tinderbox, Keylight, and Ocula. The plug-ins run on a variety of compositing platforms, including After Effects, Autodesk® Media and Entertainment Systems, Avid DS, Nuke, Shake, and Final Cut Pro. For the full list of products and supported platforms see <http://www.thefoundry.co.uk>.

Nuke is an Academy Award® winning compositor. It has been used to create extraordinary images on scores of feature films, including *Australia*, *The Dark Knight*, *Quantum of Solace*, *The Curious Case of Benjamin Button*, *The Golden Compass*, *Iron Man*, *Transformers*, *King Kong*, and *Pirates of the Caribbean: At World's End*.

Furnace is a collection of film tools. Many of the algorithms utilize motion estimation technology to speed up common compositing tasks. Plug-ins include wire removal, rig removal, steadiness, deflicker, degrain and regrain, retiming, and texture tools.

Tinder and Tinderbox are collections of image processing effects including blurs, distortion effects, background generators, colour tools, wipes, matte tools, painterly effects, lens flares and much more.

Keylight is an industry-proven blue/green screen keyer, giving results that look photographed, not composited. The Keylight algorithm was developed by the Computer Film Company who were honoured with a technical achievement award for digital compositing from the Academy of Motion Picture Arts and Sciences.

Ocula is a collection of tools that solve common problems with stereoscopic imagery, improve productivity in post production, and ultimately help to deliver a more rewarding 3D-stereo viewing experience.

Visit The Foundry's web site at <http://www.thefoundry.co.uk> for further details.

ROLLINGSHUTTER

Description

Modern digital video cameras fall into two categories: cameras with CCD sensors and cameras with CMOS sensors. Many CMOS chip designs effectively have a rolling shutter. Unlike global shutters that expose the entire frame simultaneously, rolling shutters record each frame one scan line at a time, "rolling" through the frame.

Because there is a time lag between the first scan line and the last, not all parts of the image are recorded at exactly the same time. If the subject or the camera moves during the exposure, the recorded frame may exhibit one of the three rolling shutter artifacts: skew, wobble, or partial exposure.

The RollingShutter plug-in has been designed to correct for the skew and other distortions that are the result of relative motion between an object in the scene and the camera. These can arise from the camera itself moving, an object moving in the scene, or both. Using local motion estimation (LME) technology (see page 33), the plug-in calculates the motion of objects in the scene. Based on their speed and direction, it reconstructs a corrected frame with the objects in their natural place (see Figure 1 and Figure 2).

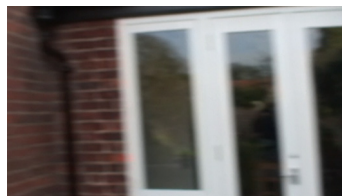


Figure 1. Before RollingShutter. Figure 2. After RollingShutter.

Because local motion estimation is used, RollingShutter is able to compensate for the skew and distortion per object. Compared to global methods that distort the entire frame, this has some advantages. For example, you can remove skew from locked-off shots of moving objects and shots of multiple objects moving in different directions.

You can also use the plug-in to add distortions to a clean plate or CG render to match a live-action shot.

Note 1 *The correction process relies on motion estimation, and shares its limitations. For example, shots where there are large, flat areas of colour, or a lot of complicated and blurry motion, suffer from a difficulty in estimating the in-scene motion. Depending on the severity of the distortion and the complexity of motion, visual artifacts may result from the correction process. If this is the case, the plug-in may be more useful for making a shot suitable for tracking than for making it look right.*

Note 2 *If there are a lot of very high frequency vibrations caused by the camera (for example, caused by a hard helicopter mount or a hand-held camera on a bumpy ride), a global solution that distorts the whole frame may give you better results than RollingShutter. For example, F_Steadiness in The Foundry's Furnace plug-in set and the free Deshaker plug-in for VirtualDub offer a global correction. However, at the time of writing, neither of these correct for the distortion of individual objects within the scene, which occurs when there is any degree of parallax within the frame.*

Note 3 *RollingShutter does not correct for rolling flicker with unsynchronized lights, or flashes and other strobes cut off half way through the frame.*

Shutter Sync

To reconstruct a frame with the objects in their natural place, RollingShutter looks at where each pixel moves in the previous and the following frame. The following frame allows it to move objects forward in time, and the previous frame

allows it to move them back.

Using the **Shutter Sync** parameter, you can choose the reference point in time that the plug-in is aiming for with its correction. Because any correction has the potential to introduce visual artifacts, you want to minimise the distance any pixels are moved in the image.

Figure 3 shows a situation where an object is moving to the right in a locked-off shot. You can see that when **Shutter Sync** is 0 (the beginning of the scan), the bottom of the object has to move quite a large distance to the left to reach its correct position. Likewise, when **Shutter Sync** is 1 (the end of the scan), the top has to move a long way to the right.

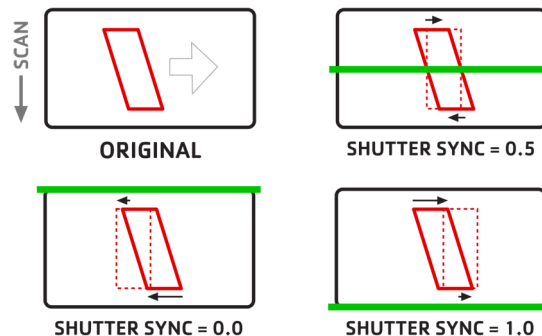
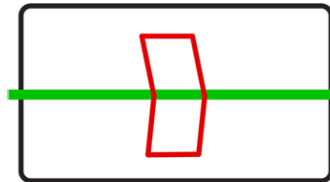


Figure 3. The effect of **Shutter Sync**.

With the default setting of 0.5 (the middle of the scan), the top and the bottom both move less, but in opposite directions. Generally, this works well and helps reduce any artifacts caused by the plug-in moving the objects around in the scene.

Problems can arise, however, if either the objects or the

camera are accelerating, which they often are. Because the top half will be corrected using motion vectors from the previous frame (backward vectors), and the bottom with those from the next (forward vectors), a "kink" can occur. The faster moving half would need more correction, so the image becomes bent.



THE 'KINK' PROBLEM

Figure 4. Setting **Shutter Sync** to 0.5 can bend the image if either the camera or the objects depicted in the shot are accelerating.

To avoid this, you can set **Shutter Sync** to 0 or 1. This tells RollingShutter to only use the forward or backward motion vectors, at the compromise of potentially introducing more artifacts due to the distance pixels have to move to be corrected. The **Show Vectors** parameter (see page 26) can be useful here, as it can help you see any significant differences between the vectors from each direction.

Inputs

RollingShutter has three inputs:

- **Source (Src)** - The skewed source image.
- **Motion Source (Motion Src)** - If supplied, motion vectors will be calculated from this sequence and applied to the **Source** sequence. This allows you to apply some processing to the image before the plug-in analyses its motion. You may want to do so, for example, if your

Source sequence is very noisy, as too much noise interferes with the motion estimation.

When a **Motion Source** clip is used, it is important that the sequence has the same resolution and covers the same temporal range as the footage you are correcting.

- **Matte** - This sequence helps the plug-in distinguish what is foreground and background in the image. This can improve the motion estimation by reducing the dragging of pixels that can occur between foreground and background objects. White areas of the matte are considered to be foreground, and black areas background. Grey areas are used to attenuate between foreground and background.

When a matte is used, it is important that the sequence has the same resolution and covers the same temporal range as the footage you are correcting.

Quick Start

To correct for the skew caused by a CMOS camera, do the following:

1. Start Nuke and import the footage you want to unskew.
2. From the Toolbar, select **RollingShutter** > **RollingShutter** to insert a RollingShutter node after the skewed images.
3. If you know how much time lag (in frames) there was in the camera's sensor, set **Correction** to the appropriate value for that camera.

If you don't know the value, find a frame in your source clip, or one shot especially for the purpose, which features a vertical edge bent due to the rolling shutter. Set **Correction** to a positive value that makes the edge vertical again. This is the correction amount for that camera, assuming the camera doesn't ever vary its read-refresh cycle rate. You can also use the same correction value, but negative, to skew clean footage to match that created by your camera.

Note that if you have a camera that scans from the bottom to the top, you need to use negative values to remove skew, and positive values to distort any clean plates.

4. View the result.
5. If you're not happy with the results, adjust the motion vector generation parameters, such as **Vector Detail** and **Smoothness**, as necessary. To see the motion vectors, check **Show Vectors**.
6. If some objects in the image show "kinks", adjust **Shutter Sync** to set when in the scan cycle is used as the reference point in time that the plug-in is aiming for with its correction. When set to 0, objects will be moved to where they should be at the start of the scan. A value of 0.5 moves objects to where they are in the middle, and a value of 1 moves them to the end. For more information, see "Shutter Sync" on page 18.

Controls

Correction - Time offset in frames from the top scan line to the bottom. In most cases, you should use positive values to remove skew, and negative values to distort any clean footage. However, if you have a camera that scans from the bottom to the top, you need to use negative values to remove skew, and positive values to distort any clean plates. This value should be constant for any given camera setup.

Vector Detail - Adjust this to vary the density of the vector field. The larger **Vector Detail** is, the greater the processing time, but the more detailed the vectors should be. A value of 1.0 will generate a vector at each pixel. A value of 0.5 will generate a vector at every other pixel. For some sequences, a high vector detail near 1.0 generates too much unwanted local motion detail, and often a low value is more appropriate. For more information on vector fields, see "Local Motion Estimation" on page 33.

Smoothness - Vector fields usually have two important qualities: they should accurately match similar pixels in one image to another and they should be smooth rather than noisy. Often, it is necessary to trade one of these qualities off against the other. A high smoothness will miss lots of local detail, but is less likely to provide you with the odd spurious vector (think of it as if the vectors were combed until they are smooth with respect to their neighbours). A low smoothness will concentrate on detail matching, even if the resulting field is jagged. The default value of 0.5 should work well for most sequences. For more information on vector fields, see "Local Motion Estimation" on page 33.

Shutter Sync - When in the scan cycle to use as the positional reference for the correction. When set to 0, objects will be moved to where they should be at the start of the scan. The default value of 0.5 moves objects to where they are in the middle, and a value of 1 moves them to the end. When **Shutter Sync** is set to values other than 0 or 1, visual artifacts arising from the correction should be reduced, but accelerating objects or cameras may show 'kinks'. For more information, see "Shutter Sync" on page 18.

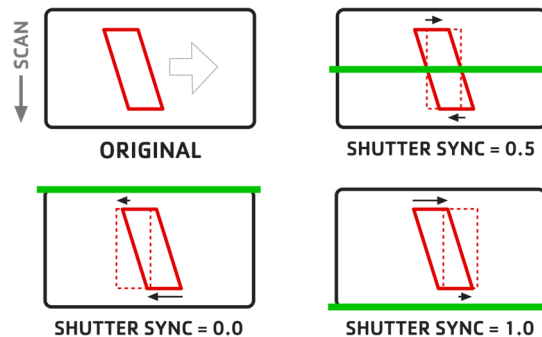


Figure 5. The effect of **Shutter Sync**.

Output - Sets the final output display for the image. Selecting anything other than **Result** is only useful when a **Matte** input is used.

- **Result** - displays the unskewed result.
- **Matte** - displays the **Matte** input.
- **Foreground** - displays the foreground - the background regions outside the **Matte** input may show garbage.
- **Background** - displays the background - the foreground regions inside the **Matte** input may show garbage.

Matte Component - The **Matte** input can be used to help the motion estimation algorithm understand what is foreground and background in the image so that the dragging of pixels between overlapping objects can be reduced. White areas of the matte are considered to be foreground, and black areas background. Grey areas are used to attenuate between foreground and background. When the **Matte** input is filled with an appropriate clip, this parameter controls how the pixel values in the matte are used to do the masking.

- **None** - don't use a matte.
- **Src Alpha** - use the alpha of the source input.
- **Src Inverted Alpha** - use the inverted alpha of the source input.
- **Matte Luminance** - use the luminance of the matte input.
- **Matte Inverted Luminance** - use the inverted luminance of the matte input.
- **Matte Alpha** - use the alpha of the matte input.
- **Matte Inverted Alpha** - use the inverted alpha of the matte input.

Advanced - The lesser used refinement controls.

Block Size - To find where a certain pixel is located in the analysis range, the vector generation algorithm looks for

a block of pixels centered around that pixel. Block size defines the width and height of these blocks (in pixels). On rare occasions, a large block size can produce data that's lacking in detail. This is because a small feature can fit into a large block, causing the motion estimation to concentrate on the background motion and ignore the small feature. A small value, instead, can produce a noisy motion field, as there aren't enough constraints in a small block to fit the motion accurately. In most cases, however, the default value is small enough so that details aren't lost, and the smoothing step of the algorithm ensures the motion field isn't too noisy. Therefore, this value very rarely needs editing.

Over Smooth - This is a computationally intensive smoothing operation that performs a different vector-smoothing operation to normal. This generates highly smooth vector fields (as if the vectors were combed several times with a fine-toothed comb), but may also sacrifice a lot of required detail. In most cases, this level of smoothing isn't necessary. However, if you have a problem sequence that looks too "broken up" after the correction, you may want to toggle **Over Smooth** on.

Filtering - Sets the quality of filtering when producing in-between frames.

- **Extreme** - uses a sinc interpolation filter to give a sharper picture than **Normal**, but takes a lot longer to render.
- **Normal** - use bilinear interpolation which gives good results and is a lot quicker than **Extreme**.

Warp Mode - Select a method to use to reconstruct the corrected image.

- **Simple** - this is the quickest option, but may produce less than optimal results around moving objects and image edges.
- **Normal** - this is the standard option, with more optimal treatment of moving objects and image edges.
- **Occlusions** - this is an advanced option that can improve the results when not doing a separated picture build with multiple vector sequences and mattes. It attempts to reduce the level of background dragging that occurs between foreground and background objects.
- **Sharp Occlusions** - This option is similar to **Occlusions**, but produces fewer artifacts if the generated vector fields are extremely accurate.

Show Vectors - Switch this on to display the calculated motion vectors on the screen. This can be particularly useful when adjusting the **Shutter Sync** parameter (see page 18).

Luminance Correct - LME is highly dependent upon the idea that the brightness of objects doesn't vary through a sequence. Where brightness varies rapidly - for example a highlight moving across the bodywork of a car - the motion calculation will perform poorly. The luminance of a shot can come from other sources too - such as an overall flicker problem. In these cases where there is a global luminance shift, toggling this control on will allow the LME algorithm to take account of overall brightness changes between frames.

Tolerances - For efficiency, much of the LME is done on luminance only - that is, using monochrome images. The tolerances allow you to tune the weight of each colour channel when calculating the image luminance. These parameters rarely need tuning. However, you may, for example, wish to increase the red weighting **Weight Red** to allow the algorithm to concentrate on getting the motion of a primarily red object correct, at the cost of the rest of the items in a shot.

Weight Red

Weight Green

Weight Blue

About - Show information about this plug-in. The information includes the plug-in's version number and help text as well as the location of this user guide. You can also click the ? button in the RollingShutter properties to display the same information.

Example

This example shows you how to calibrate a camera to find out the correct **Correction** value for any images shot with the same camera setup. You'll also learn how to get rid of any kinks that the correction process may introduce.

The image sequence used here was shot with a RED camera and is courtesy of FXphd.com. You can download from our web site at <http://www.thefoundry.co.uk>. From the RollingShutter product page, click on the **Tutorials & Example Images** link.

Step by Step

1. Start Nuke and select **Image > Read** to import RollingShutter.mov.
2. Scrub through the frames. Notice how the windows and walls in the clip have become skewed as a result of the quick camera pan. This is particularly obvious on frame 5, as shown in Figure 6.

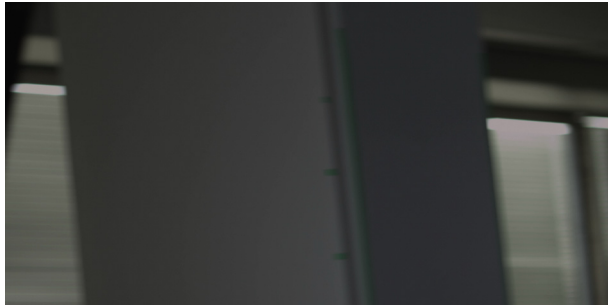


Figure 6. On frame 5, the wall appears to lean towards the left.

3. Select **RollingShutter > RollingShutter** to insert a RollingShutter node after the image sequence. Make sure the image sequence is connected to the **Source** input of RollingShutter, and view the result.

The plug-in estimates a corrected image from the input sequence.

4. Go to frame 5. As you can see, RollingShutter in its default state is compensating for the skew too much, making the wall look like it's leaning towards the right (see Figure 7).

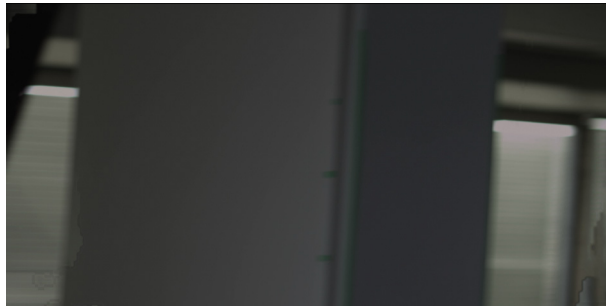


Figure 7. The default **Correction** value of 0.5.

5. In the RollingShutter controls, adjust the **Correction** value. This value should be constant for any given camera setup. However, as we do not know the correct value for the camera that was used to shoot our images, a bit of trial and error is required. Decrease the **Correction** value until the wall looks vertical. You should end up with a value of 0.32.

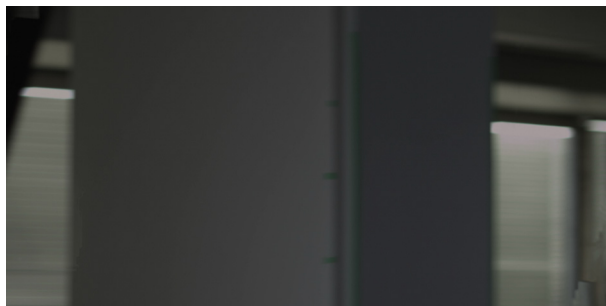


Figure 8. A **Correction** value of 0.32.

6. This footage was shot specifically for the purpose of finding out the correct **Correction** value for the camera in question, and

that is now done. However, if you step through the frames to see how the correction holds up, you should see a kink in the wall on frame 8 (see Figure 9). If you were to use this footage for any other purpose than calibrating the camera, the kink could be a problem.

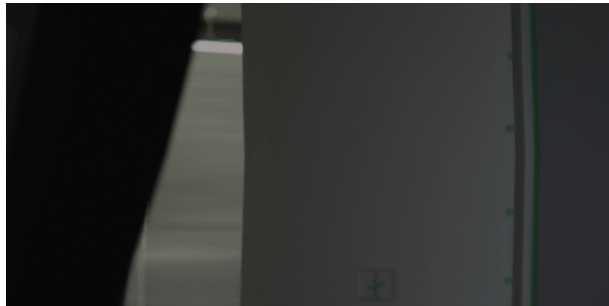


Figure 9. The kink on frame 8.

The kink was created because by default **Shutter Sync** in the RollingShutter controls is set to 0.5 to reduce the appearance of artifacts. This means the plug-in uses the middle of the scan cycle as a positional reference for the correction. It uses motion vectors from the previous frame (backward vectors) to correct the top half of the image, and those from the next (forward vectors) to correct the bottom. Because the camera used to shoot the images was accelerating on frame 8, the correction for the top half does not match the correction for the bottom.

7. To get rid of the kink, you need to set **Shutter Sync** to either 0 or 1. This tells RollingShutter to either only use the backward motion vectors and move the objects to where they are in the beginning of the scan cycle, or use the forward motion vectors

and aim for the end of the scan. In the case of our example, set **Shutter Sync** to 0.



Figure 10. Setting **Shutter Sync** to 0 gets rid of the kink.

8. Play through the frames to evaluate the results. As you can see, the skewing of objects has been greatly reduced. However, setting **Shutter Sync** to 0 has also introduced some artifacts in the image. Depending on what you want to use the images for, the results may need further editing.

LOCAL MOTION ESTIMATION

Introduction

In this chapter, we look at Local Motion Estimation (or LME) technology, which is the per-pixel motion analysis used in RollingShutter.

Description

The easiest way to understand LME is to think in terms of vector fields. A vector field for an image in a sequence has the same dimensions as the image, but contains an (x,y) offset per pixel. These offsets show how to warp a neighbouring image onto the current image. Clearly, as most of the images in a sequence have two neighbours, each can have two vector fields. These are called the 'forward motion vectors' where they represent the warp of the image in front of the current one, and 'backward motion vectors' where they represent the warp of the image behind the current one.

This is an approximation to what is really going on in an image sequence. A single vector field can be thought of as representing a warp or a morph - sometimes referred to as a 'rubber sheet' warp and cannot truly represent multiple overlapping motions. This effect can be seen where moving foreground objects appear to drag the background. To help cope with this restriction, RollingShutter allows the use of two vector fields per frame, one representing foreground motion and one representing background motion, where a matte input is used to identify the separation. In addition, the **Occlusions** parameter attempts to improve the rubber-sheet effect when separate vector fields aren't being used.

The vector generation process has a number of tuning

parameters which can be used to adapt the vectors to suit particular sequences, as well as to trade off render time versus accuracy of vectors.

To see the motion vectors RollingShutter has calculated, check **Show Vectors** in the RollingShutter controls.

APPENDIX A

Release Notes

This section describes the requirements, new features, improvements, fixed bugs and known bugs & workarounds for each release of RollingShutter.

RollingShutter 1.0v1

This is the first release of RollingShutter 1.0 for Nuke.

Release Date

August 2009

Requirements

1. Nuke 5.1 or later on Windows, Mac OS X, or Linux.
2. Foundry FLEXIm Tools (FFT 5.0v1 or later) for floating licenses.

New Features

There is one plug-in in this release.

Improvements

This section will describe new features in later versions.

Bug Fixes

This section will describe fixed bugs in later versions.

Known Bugs and Workarounds

BUG ID 8356 - Memory Considerations : RollingShutter is a memory intensive plug-in and will use a lot of RAM during processing. This can raise issues on Windows 32-bit

machines where memory management can get fragmented. If processing a 4K plate on a Windows 32-bit machine, you may find that RollingShutter easily runs out of memory. There is currently no solution to this.

APPENDIX B

End User License Agreement

IMPORTANT: BY INSTALLING THIS SOFTWARE YOU ACKNOWLEDGE THAT YOU HAVE READ THIS AGREEMENT, UNDERSTAND IT AND AGREE TO BE BOUND BY ITS TERMS AND CONDITIONS. IF YOU DO NOT AGREE TO THE TERMS OF THIS AGREEMENT DO NOT INSTALL, COPY OR USE THE SOFTWARE.

This END USER SOFTWARE LICENSE AGREEMENT (this "Agreement") is made by and between The Foundry Visionmongers Ltd., a company registered in England and Wales, ("The Foundry"), and you, as either an individual or a single entity ("Licensee").

In consideration of the mutual covenants contained herein and for other good and valuable consideration (the receipt and sufficiency of which is acknowledged by each party hereto) the parties agree as follows:

SECTION 1. GRANT OF LICENSE.

Subject to the limitations of Section 2, The Foundry hereby grants to Licensee a limited, non-transferable and non-exclusive license to install and use a machine readable, object code version of this software program (the "Software") and the accompanying user guide and other documentation (collectively, the "Documentation") solely for Licensee's own internal business purposes (collectively, the "License"); provided, however, Licensee's right to install and use the Software and the Documentation is limited to those rights expressly set out in this Agreement.

SECTION 2. RESTRICTIONS ON USE.

Licensee is authorized to use the Software in machine readable, object code form only, and Licensee shall not: (a) assign, sublicense, transfer, pledge, lease, rent, share or export the Software, the Documentation or Licensee's rights hereunder; (b) alter or circumvent the copy protection mechanisms in the Software or reverse engineer, decompile, disassemble or otherwise attempt to discover the source code of the Software; (c) modify, adapt, translate or create derivative works based on the Software or Documentation; (d) use, or allow the use of, the Software or Documentation on any project other than a project produced by Licensee (an "Authorized Project"); (e) allow or permit anyone (other than Licensee and Licensee's authorized employees to the extent they are working on an

Authorized Project) to use or have access to the Software or Documentation; (f) copy or install the Software or Documentation other than as expressly provided for herein; or (g) take any action, or fail to take action, that could adversely affect the trademarks, service marks, patents, trade secrets, copyrights or other intellectual property rights of The Foundry or any third party with intellectual property rights in the Software (each, a "Third Party Licensor"). Furthermore, for purposes of this Section 2, the term "Software" shall include any derivatives of the Software.

Licensee shall install and use only a single copy of the Software on one computer, unless the Software is installed in a "floating license" environment, in which case Licensee may install the Software on more than one computer; provided, however, Licensee shall not at any one time use more copies of the Software than the total number of valid Software licenses purchased by Licensee.

Furthermore, the Software can be licensed on an "interactive" or "non-interactive" basis. Licensee shall be authorized to use a non-interactive version of the Software for rendering purposes only (i.e., on a CPU, without a user, in a non-interactive capacity) and shall not use such Software on workstations or otherwise in a user-interactive capacity. Licensee shall be authorized to use an interactive version of the Software for both interactive and non-interactive rendering purposes, if available.

Finally, if the Software is an "Educational Version," Licensee may use it only for the purpose of training and instruction, and for no other purpose. Educational Versions of the Software may not be used for commercial, professional or for-profit purposes.

SECTION 3. BACK-UP COPY.

Notwithstanding Section 2, Licensee may store one copy of the Software and Documentation off-line and off-site in a secured location owned or leased by Licensee in order to provide a back-up in the event of destruction by fire, flood, acts of war, acts of nature, vandalism or other incident. In no event may Licensee use the back-up copy of the Software or Documentation to circumvent the usage or other limitations set forth in this Agreement.

SECTION 4. OWNERSHIP.

Licensee acknowledges that the Software and Documentation and all intellectual property rights relating thereto are and shall remain the sole property of The Foundry and the Third Party Licensors. Licensee shall not remove, or allow the removal of, any copyright or other proprietary rights notice included in and on the Software or Documentation or take any other action that could adversely affect the property rights of The Foundry or any Third Party Licensor. To the extent that Licensee is authorized to make copies of the Software or Documentation under this Agreement, Licensee shall

reproduce in and on all such copies any copyright and/or other proprietary rights notices provided in and on the materials supplied by The Foundry hereunder. Nothing in this Agreement shall be deemed to give Licensee any rights in the trademarks, service marks, patents, trade secrets, copyrights or other intellectual property rights of The Foundry or any Third Party Licensor, and Licensee shall be strictly prohibited from using the name, trademarks or service marks of The Foundry or any Third Party Licensor in Licensee's promotion or publicity without The Foundry's express written approval.

SECTION 5. LICENSE FEE.

Licensee understands that the benefits granted to Licensee hereunder are contingent upon Licensee's payment in full of the license fee payable in connection herewith (the "License Fee").

SECTION 6. TAXES AND DUTIES.

Licensee agrees to pay, and indemnify The Foundry from claims for, any local, state or national tax (exclusive of taxes based on net income), duty, tariff or other impost related to or arising from the transaction contemplated by this Agreement.

SECTION 7. LIMITED WARRANTY.

The Foundry warrants that, for a period of ninety (90) days after delivery of the Software: (a) the machine readable electronic files constituting the Software and Documentation shall be free from errors that may arise from the electronic file transfer from The Foundry and/or its authorized reseller to Licensee; and (b) to the best of The Foundry's knowledge, Licensee's use of the Software in accordance with the Documentation will not, in and of itself, infringe any third party's copyright, patent or other intellectual property rights. Except as warranted, the Software and Documentation is being provided "as is." THE FOREGOING LIMITED WARRANTY IS IN LIEU OF ALL OTHER WARRANTIES OR CONDITIONS, EXPRESS OR IMPLIED, AND The Foundry DISCLAIMS ANY AND ALL IMPLIED WARRANTIES OR CONDITIONS, INCLUDING, WITHOUT LIMITATION, ANY IMPLIED WARRANTY OF TITLE, NON-INFRINGEMENT, MERCHANTABILITY OR FITNESS FOR A PARTICULAR PURPOSE, REGARDLESS OF WHETHER The Foundry KNOWS OR HAS REASON TO KNOW OF LICENSEE'S PARTICULAR NEEDS. The Foundry does not warrant that the Software or Documentation will meet Licensee's requirements or that Licensee's use of the Software will be uninterrupted or error free. No employee or agent of The Foundry is authorized to modify this limited warranty, nor to make additional warranties. No action for any breach of the above limited warranty may be commenced more than one (1) year after Licensee's initial receipt of the Software. To the extent any implied warran-

ties may not be disclaimed under applicable law, then ANY IMPLIED WARRANTIES ARE LIMITED IN DURATION TO NINETY (90) DAYS AFTER DELIVERY OF THE SOFTWARE TO LICENSEE.

SECTION 8. LIMITED REMEDY.

The exclusive remedy available to the Licensee in the event of a breach of the foregoing limited warranty, TO THE EXCLUSION OF ALL OTHER REMEDIES, is for Licensee to destroy all copies of the Software, send The Foundry a written certification of such destruction and, upon The Foundry's receipt of such certification, The Foundry will make a replacement copy of the Software available to Licensee.

SECTION 9. INDEMNIFICATION.

Licensee agrees to indemnify, hold harmless and defend The Foundry and The Foundry's affiliates, officers, directors, shareholders, employees, authorized resellers, agents and other representatives (collectively, the "Released Parties") from all claims, defense costs (including, but not limited to, attorneys' fees), judgments, settlements and other expenses arising from or connected with the operation of Licensee's business or Licensee's possession or use of the Software or Documentation.

SECTION 10. LIMITED LIABILITY.

In no event shall the Released Parties' cumulative liability to Licensee or any other party for any loss or damages resulting from any claims, demands or actions arising out of or relating to this Agreement (or the Software or Documentation contemplated herein) exceed the License Fee paid to The Foundry or its authorized reseller for use of the Software. Furthermore, IN NO EVENT SHALL THE RELEASED PARTIES BE LIABLE TO LICENSEE UNDER ANY THEORY FOR ANY INDIRECT, SPECIAL, INCIDENTAL, PUNITIVE, EXEMPLARY OR CONSEQUENTIAL DAMAGES (INCLUDING DAMAGES FOR LOSS OF BUSINESS OR LOSS OF PROFITS) OR THE COST OF PROCUREMENT OF SUBSTITUTE GOODS OR SERVICES, REGARDLESS OF WHETHER THE RELEASED PARTIES KNOW OR HAVE REASON TO KNOW OF THE POSSIBILITY OF SUCH DAMAGES AND REGARDLESS OF WHETHER ANY REMEDY SET FORTH HEREIN FAILS OF ITS ESSENTIAL PURPOSE. No action arising out of or related to this Agreement, regardless of form, may be brought by Licensee more than one (1) year after Licensee's initial receipt of the Software; provided, however, to the extent such one (1) year limit may not be valid under applicable law, then such period shall be limited to the shortest period allowed by law.

SECTION 11. TERM; TERMINATION.

This Agreement is effective upon Licensee's acceptance of the terms hereof (by clicking on the "Accept" button) and Licensee's payment of the License Fee, and the Agreement will remain in effect until termination. If Licensee breaches this Agreement, The Foundry may terminate the License granted hereunder by notice to Licensee. In the event the License is terminated, Licensee will either return to The Foundry all copies of the Software and Documentation in Licensee's possession or, if The Foundry directs in writing, destroy all such copies. In the later case, if requested by The Foundry, Licensee shall provide The Foundry with a certificate signed by an officer of Licensee confirming that the foregoing destruction has been completed.

SECTION 12. CONFIDENTIALITY.

Licensee agrees that the Software and Documentation are proprietary and confidential information of The Foundry and that all such information and any communications relating thereto (collectively, "Confidential Information") are confidential and a fundamental and important trade secret of The Foundry. Licensee shall disclose Confidential Information only to Licensee's employees who are working on an Authorized Project and have a "need-to-know" such Confidential Information, and shall advise any recipients of Confidential Information that it is to be used only as authorized in this Agreement. Licensee shall not disclose Confidential Information or otherwise make any Confidential Information available to any other of Licensee's employees or to any third parties without the express written consent of The Foundry. Licensee agrees to segregate, to the extent it can be reasonably done, the Confidential Information from the confidential information and materials of others in order to prevent commingling. Licensee shall take reasonable security measures, which such measures shall be at least as great as the measures Licensee uses to keep Licensee's own confidential information secure (but in any case using no less than a reasonable degree of care), to hold the Software, Documentation and any other Confidential Information in strict confidence and safe custody. The Foundry may request, in which case Licensee agrees to comply with, certain reasonable security measures as part of the use of the Software and Documentation. Licensee acknowledges that monetary damages may not be a sufficient remedy for unauthorized disclosure of Confidential Information, and that The Foundry shall be entitled, without waiving any other rights or remedies, to such injunctive or equitable relief as may be deemed proper by a court of competent jurisdiction.

SECTION 13. INSPECTION.

Licensee shall advise The Foundry on demand of all locations where the Software or Documentation is used or stored. Licensee shall permit The Foundry or its authorized agents to inspect all such locations during normal business hours and on reasonable advance notice.

SECTION 14. NONSOLICITATION.

Licensee agrees not to solicit for employment or retention, and not to employ or retain, any of The Foundry's current or future employees who were or are involved in the development and/or creation of the Software.

SECTION 15. U.S. GOVERNMENT LICENSE RIGHTS.

The Software, Documentation and/or data delivered hereunder are subject to the terms of this Agreement and in no event shall the U.S. Government acquire greater than RESTRICTED/LIMITED RIGHTS. At a minimum, use, duplication or disclosure by the U.S. Government is subject to the applicable restrictions of: (i) FAR §52.227-14 ALTS I, II and III (June 1987); (ii) FAR §52.227-19 (June 1987); (iii) FAR §12.211 and 12.212; and/or (iv) DFARS §227.7202-1(a) and DFARS §227.7202-3.

The Software is the subject of the following notices:

* Copyright (c) 2009 The Foundry Visionmongers, Ltd.. All Rights Reserved.

* Unpublished-rights reserved under the Copyright Laws of the United Kingdom.

SECTION 16. SURVIVAL.

Sections 2, 4, 5, 6, 7, 8, 9, 10, 12, 13, 14, 15, 16, 17 and 18 shall survive any termination or expiration of this Agreement.

SECTION 17. IMPORT/EXPORT CONTROLS.

To the extent that any Software made available hereunder is subject to restrictions upon export and/or reexport from the United States, Licensee agrees to comply with, and not act or fail to act in any way that would violate, the applicable international, national, state, regional and local laws and regulations, including, without limitation, the United States Foreign Corrupt Practices Act, the Export Administration Act and the Export Administration Regulations, as amended or otherwise modified from time to time, and neither The Foundry nor Licensee shall be required under this Agreement to act or fail to act in any way which it believes in good faith will violate any such laws or regulations.

SECTION 18. MISCELLANEOUS.

This Agreement is the exclusive agreement between the parties concerning the subject matter hereof and supersedes any and all prior oral or written agreements, negotiations, or other dealings between the parties concerning such subject. This Agreement may be modified only by a written instrument signed by both parties. If any action is brought by either party to this Agreement against the other party regarding the subject matter hereof, the prevailing party shall be entitled to recover, in addition to any other relief granted, reasonable attorneys' fees and expenses of litigation. Should any term of this Agreement be declared void or unenforceable by any court of competent jurisdiction, such declaration shall have no effect on the remaining terms of this Agreement. The failure of either party to enforce any rights granted hereunder or to take action against the other party in the event of any breach hereunder shall not be deemed a waiver by that party as to subsequent enforcement of rights or subsequent actions in the event of future breaches. This Agreement shall be governed by, and construed in accordance with English Law.

Copyright (c) 2009 The Foundry Visionmongers Ltd. All Rights Reserved. Do not duplicate.

INDEX

A-Z

A

alternative license
directories 10

B

backward vector fields 33

C

CCD sensors 17
CMOS sensors 17

E

End User License
Agreement 37
error log files 11

F

FLD 11
FLEXIm licensing 14
FLI 8
forward vector fields 33
FOUNDRY_LICENSE_FILE 10
Foundry, The 15
web site 16

G

global shutters 17

I

inputs 20
installation 6
on Linux 7
on Mac 6

on Windows 6
installation directory 7
installation directory, moving
the 8
installing a license 8

K

kink problem 20

L

license directory
moving the 10
license file location 10
license problems 11
LME 33
Imhostid 9
local motion estimation 33

M

Matte input 21
motion estimation
local 33
Motion Source input 20

N

network rendering 11, 12

O

OFX plug-in directory 8
OFX_PLUGIN_PATH 8

R

release notes 35
rolling shutter artifacts 17
rolling shutters 17

S

Shutter Sync 18
shutters
global 17
rolling 17
Source input 20
system ID 9
system requirements 6

T

The Foundry 15
web site 16
The Foundry License
Diagnostics 11
The Foundry License
Installer 8
The Foundry products 15

V

vector fields 33
backward 33
forward 33

W

watermark 11
web site 16